



Dillon Reservoir Operations 2021

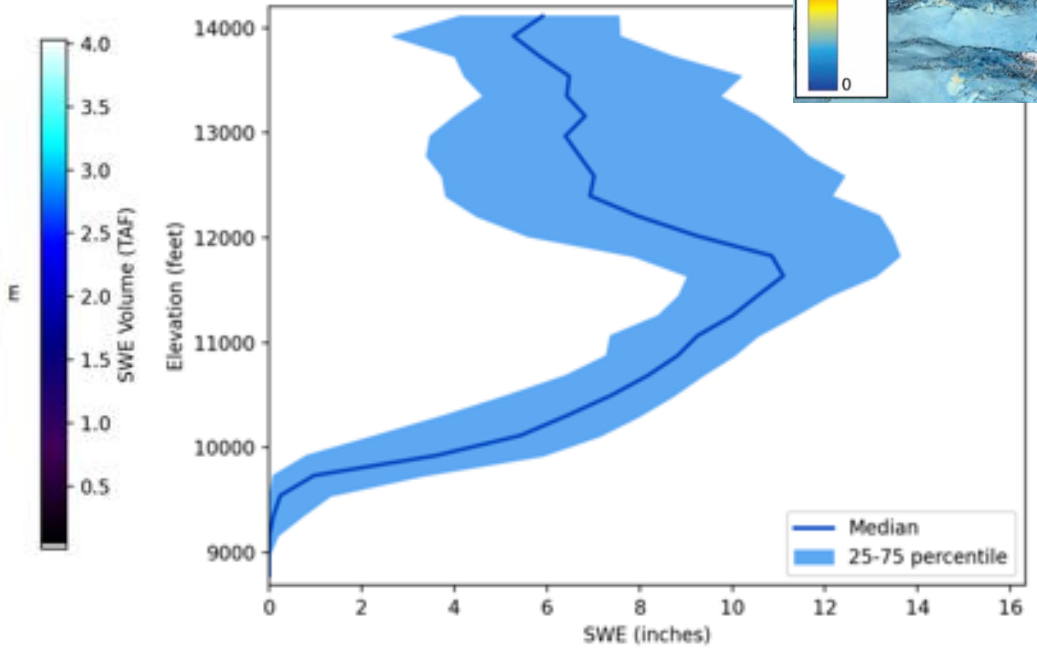
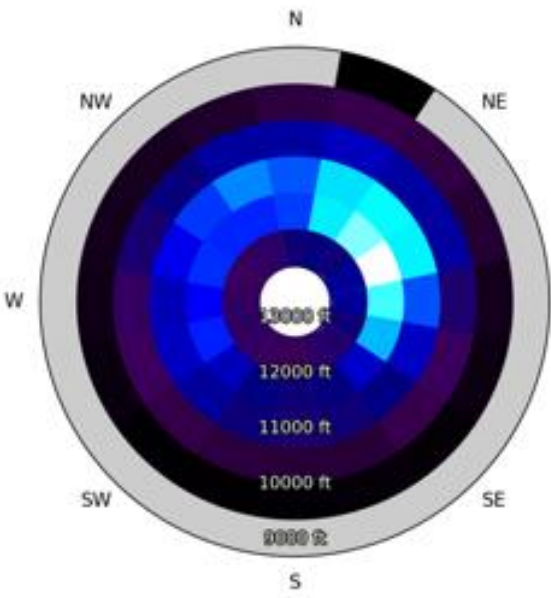
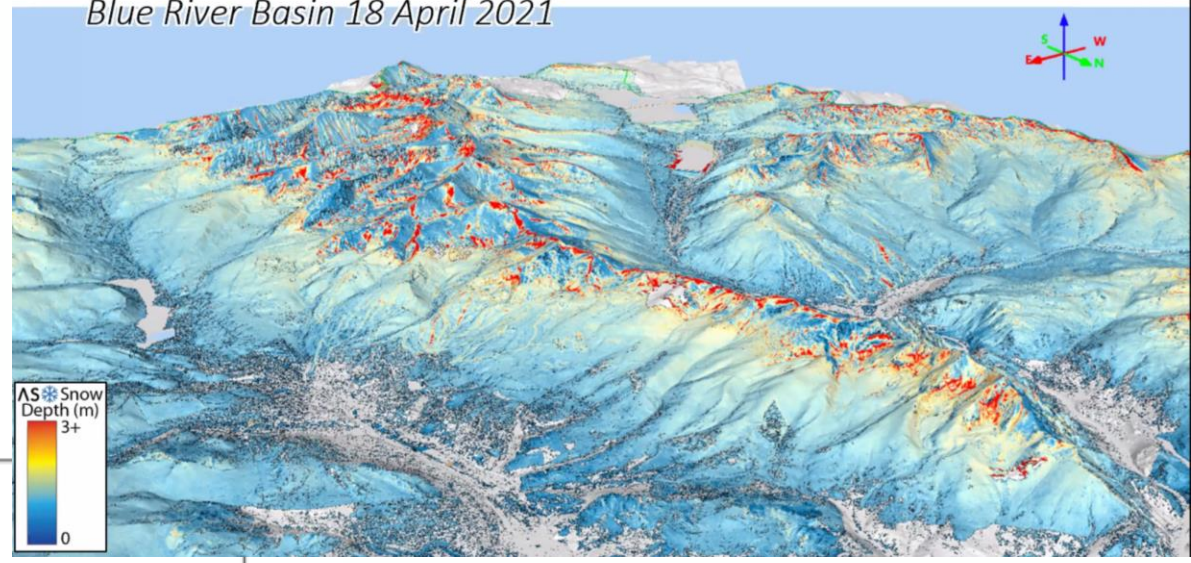
5/20/2021 Nathan Elder
and Jason Finehout

 DENVER WATER

Airborne Snow Observatory Measurement

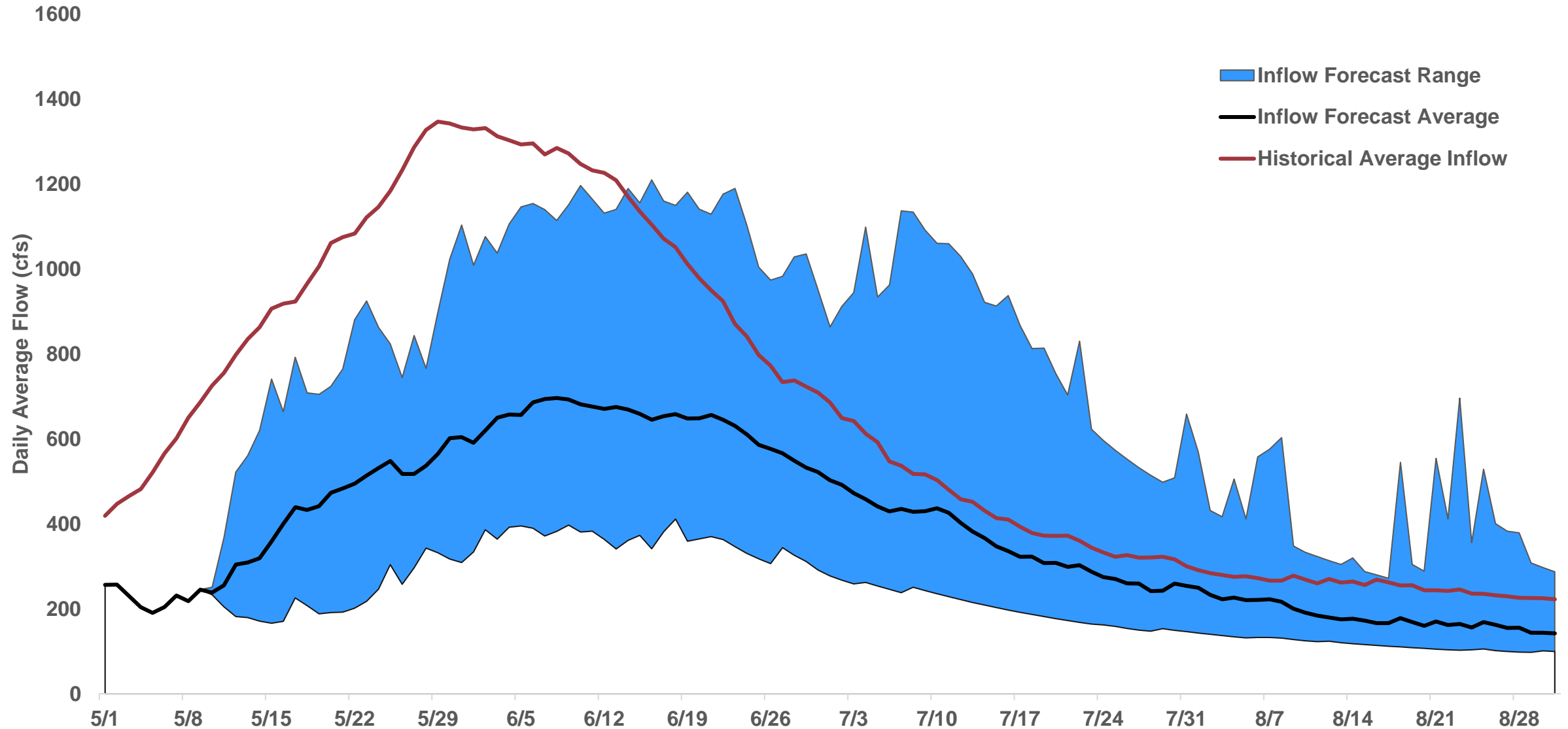
- Forecasted values close
- More lower elevation snowpack
- High elevation snowpack less than mid elevation
 - Opposite of forecast models

Airborne Snow Observatory
Blue River Basin 18 April 2021

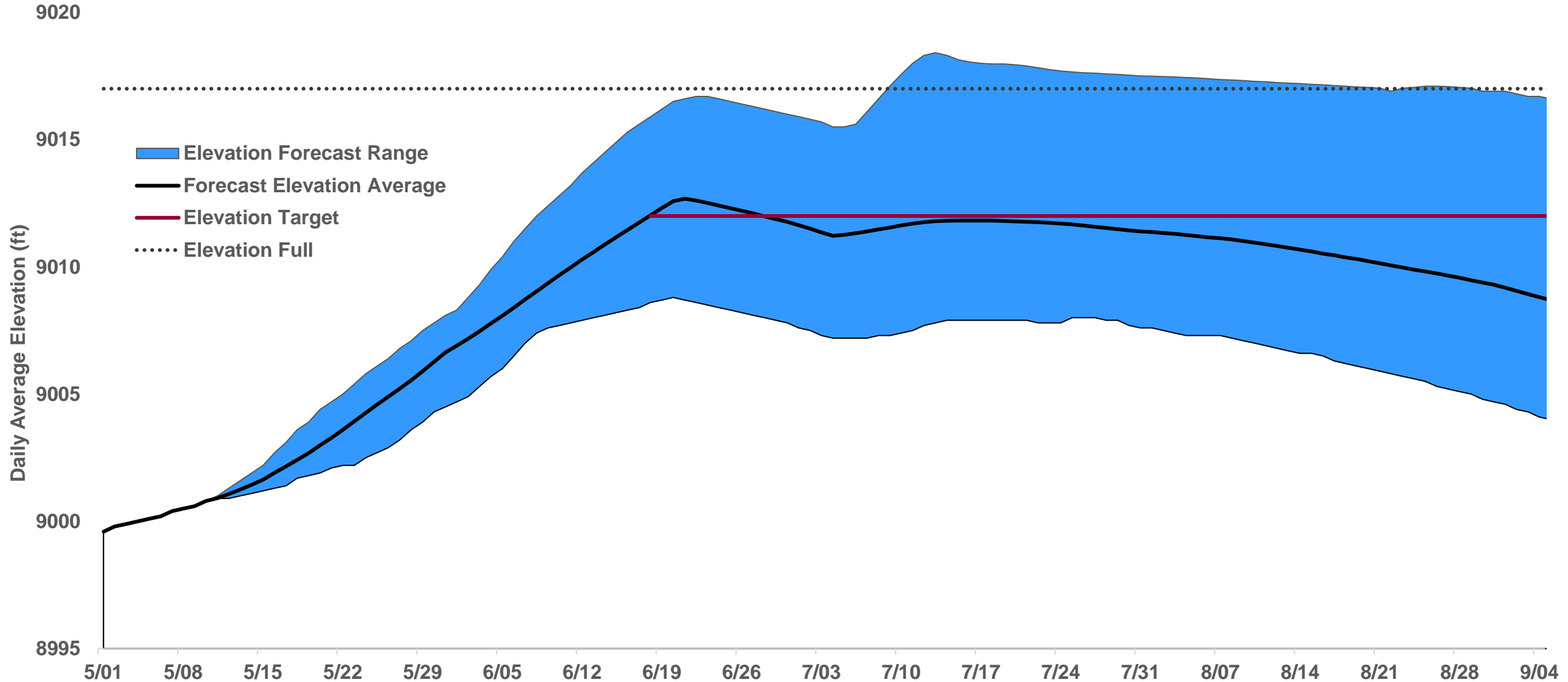


	SWE (TAF)
Full basin	127.4
Uncertainty range	120.9-133.9
Lower	12.2
Main Stem	49.1
Snake River	25.8
Ten Mile Creek	40.3

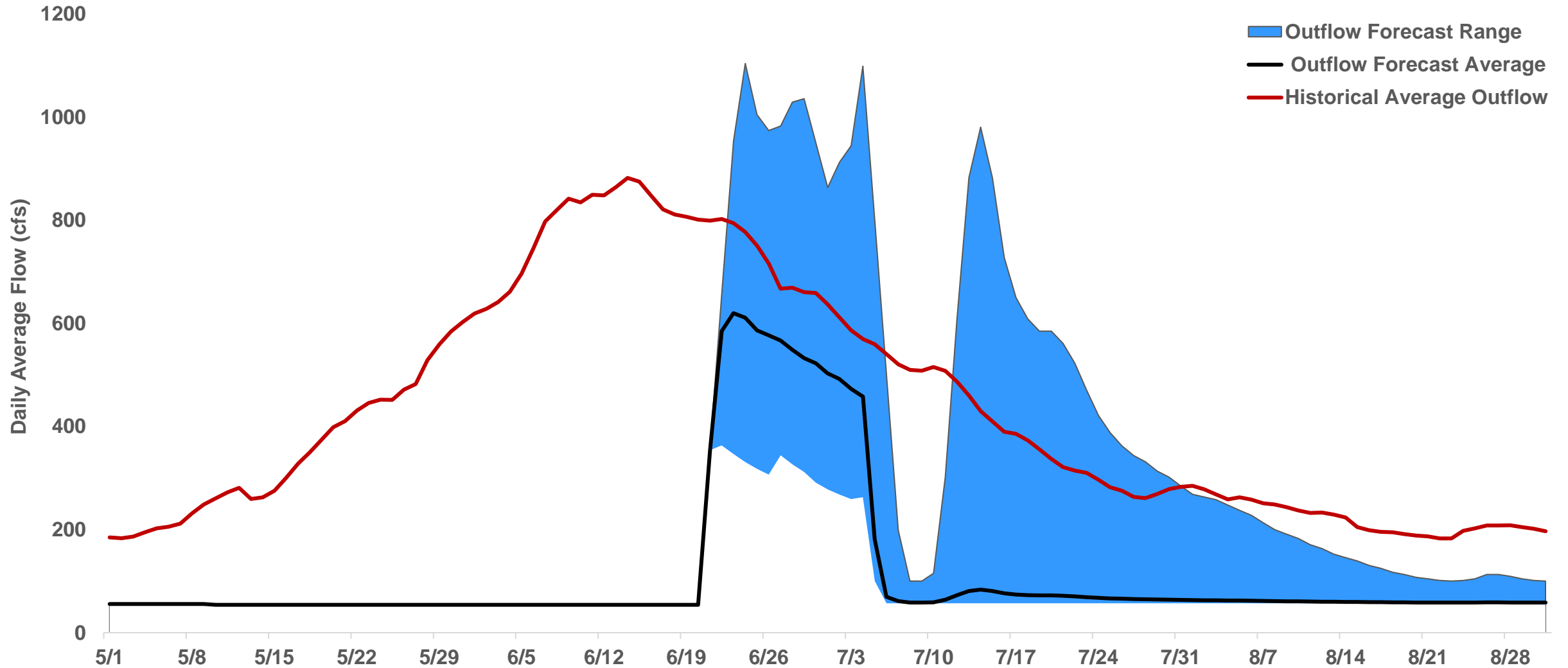
Dillon Reservoir Inflow Forecast



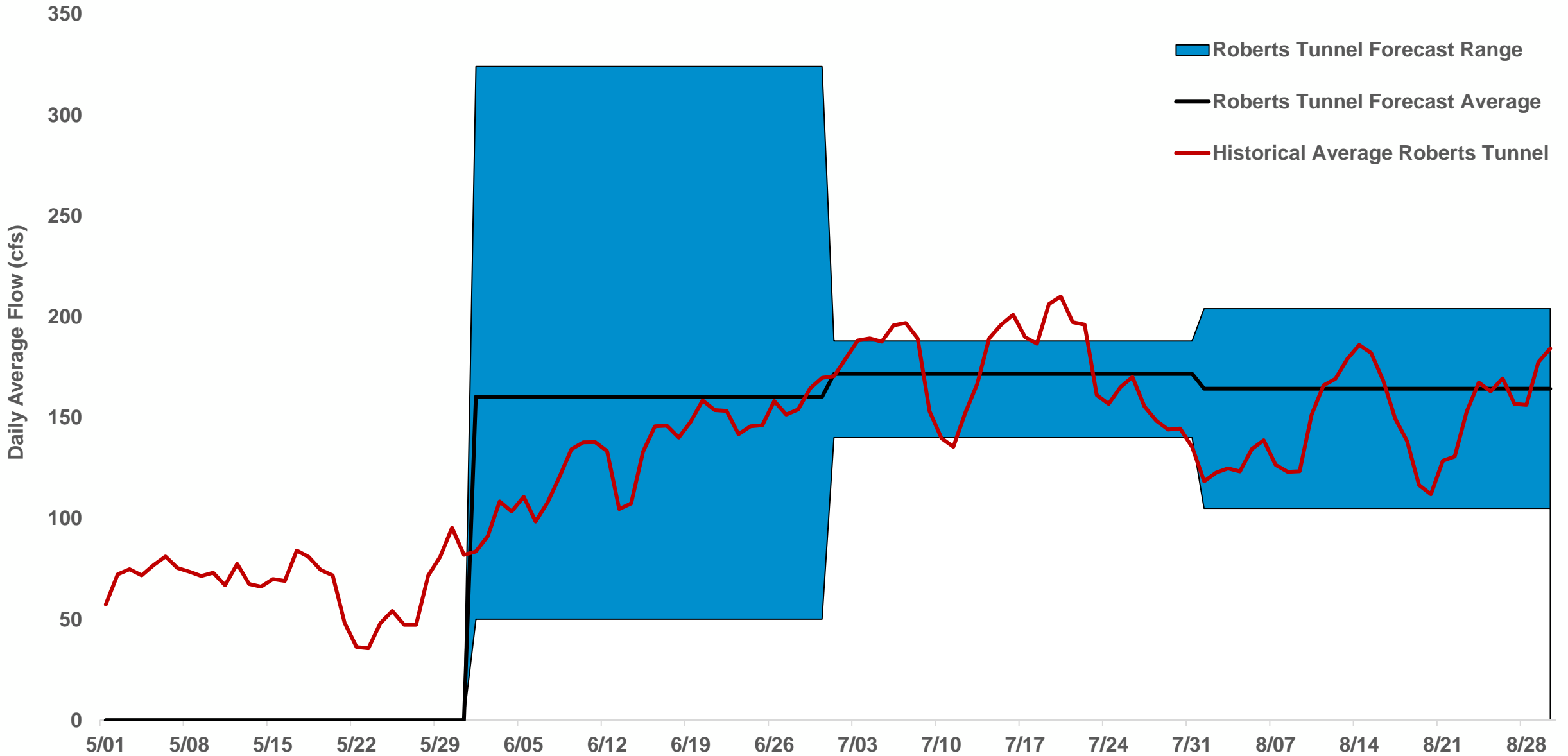
Dillon Reservoir Storage Forecast



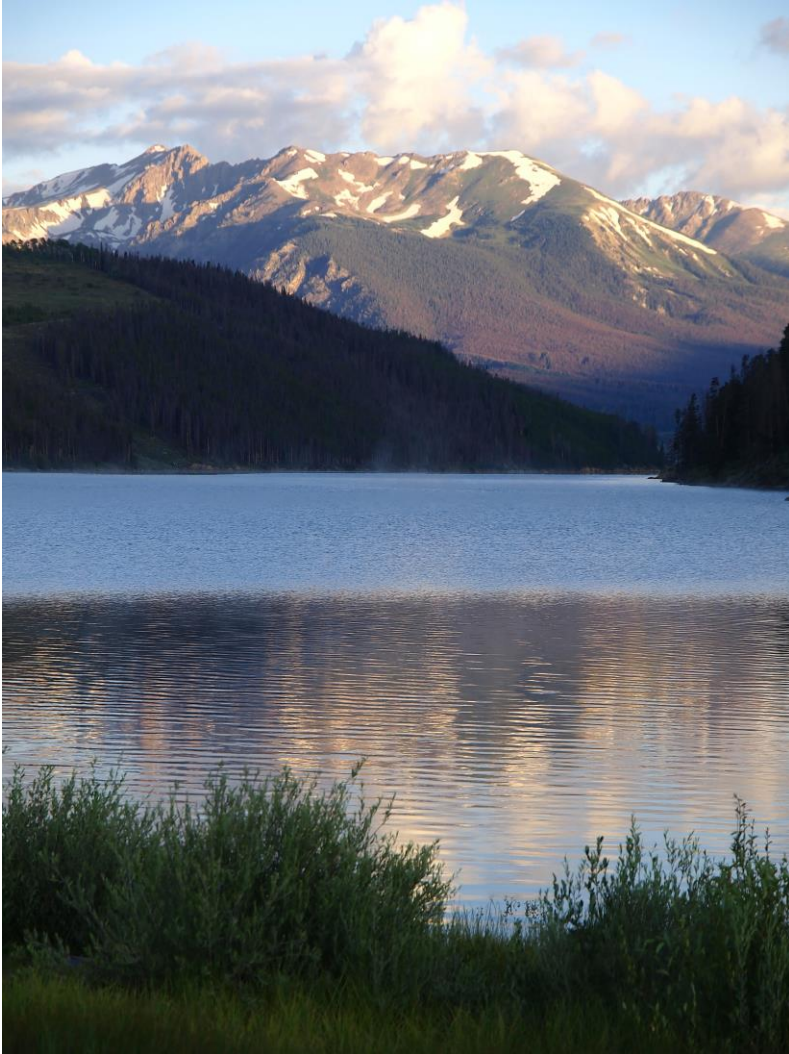
Dillon Reservoir Outflow Forecast



Roberts Tunnel Flow Forecast



Dillon Reservoir Anticipated Operations Summary



- ASO measurement confirm CBRFC forecast
- Dillon Reservoir has low probability of filling
- Peak outflow likely to be 50-1,200 cfs
- Sustained outflow above 500 cfs not anticipated
- June 18 reservoir elevation expected to be 9,012 ft
- Roberts Tunnel forecasted below average

Communications and Outreach

 **Denver Water** @DenverWater · Feb 11
It's that time of year to think about flowers. ...

Use less water, plant water-wise plants from [@ResourceCentral](#)

Visit: resourcecentral.org/gardens/



A watchful eye on the 'Big River'

Amid dry soils and struggling snowpack in Denver Water's collection area, longer-term Colorado River challenges also loom large.

February 12, 2021 | By: [Todd Hartman](#)

Share: [f](#) [t](#) [in](#) [m](#)

Denver Water's supply managers are closely attuned to the dry weather, lagging snowpack and poor soil moisture in its mountainous collection area that [could mean heightened efforts](#) to conserve water this summer.

At the same time, the utility is closely engaged with a more persistent and growing [long-term challenge](#): a drying trend across the seven-state Colorado River Basin.



The Colorado River, which feeds into Lake Powell, begins its 1,450-mile journey in Rocky Mountain National Park near Grand Lake, Colorado. Denver Water gets half of its water from tributaries that feed into the Colorado River. Some of these tributaries include the Fraser River in Grand County and the Blue River in Summit County. Photo credit: Denver Water.

Annual Summer Watering Rules

- In effect every year from May 1 until October 1
 - Water during cooler times of the day — lawn watering is not allowed between 10 a.m. and 6 p.m.
 - Water no more than three days per week.
 - Do not allow water to pool in gutters, streets and alleys.
 - Do not waste water by letting it spray on concrete and asphalt.
 - Repair leaking sprinkler systems within 10 days.
 - Do not irrigate while it is raining or during high winds.
 - Use a hose nozzle with a shut-off valve when washing your car.